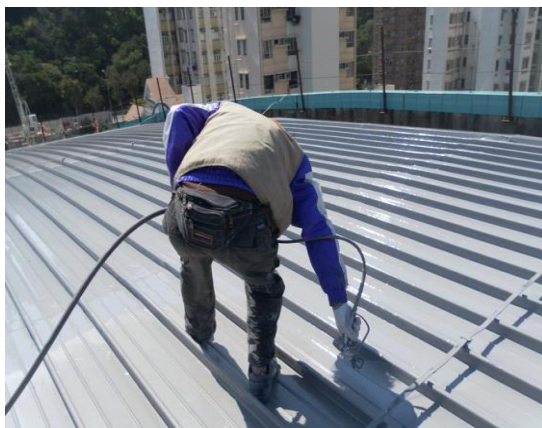




Sheltercoat 157

Spray Applied Waterproofing Membrane

Body coat of the Heavy Duty Spray Applied Waterproofing
PU Membrane System



Corrugated Sheet



Metal Roofing



Canopy



Existing Roof Tile



Sheltercoat 157

Spray Applied Waterproofing Membrane

**Body coat of the Heavy Duty Spray Applied Waterproofing
PU Membrane System**

Existing roofing system can be retained, highly reduce landfill loading
Environmental friendly, reduce noise pollution and disturbance to property users
Reduce total construction time, leads to early completion
Very high application efficiency and speed up whole re-roofing work process
Very high abrasion resistance (heavy duty) even for rubber wheels trolleys
Category of Slip Resistance – R10
Excellent adhesion and chemical resistance
Ideal for regular maintenance traffic and fit for most confined area work
Designed for spray application
Over 500% elongation
Toxic free & low VOC
Ten-year warranty including existing waterproofing system

ARDEX HONG KONG Ltd
Unit D, 16/F., CNT Tower,
No. 338 Hennessy Road, Wanchai,
Tel : + 852 2529 8615
Fax : + 852 2529 6325
Email : info@ardex.com.hk
Internet : www.ardex.com.hk

Sheltercoat 157

Spray Applied Waterproofing Membrane

Description

Sheltercoat 157 Spray Applied Waterproofing Membrane is one-component moisture cured waterproofing system for waterproofing and flooring designed to be applied using airless spray techniques.

Features

- Excellent flexibility
- One component
- Good adhesion to a wide range of substrates
- Excellent chemical resistance
- Decrease of construction cost and time
- Can be applied as a single coat finish

Typical Applications

- Planter box internals.
- Roof and Deck areas
- Landscaped Decks.

Application

Application method is by airless spray gun. Surface should be primed with ARDEX WPM 300 Sheltercoat 157 spray applied waterproofing membrane should be applied at the required thickness of 1.2mm.

In the event that this is not achieved in one coat a second coat must be applied after the first coat has been dried at least 6 hours.

To achieve a UV stable finish Sheltercoat 157 needs to be protected using Shelter-Top spray applied PU top coat.

Priming

Prime with ARDEX WPM 300.

Application Method

Apply the Sheltercoat 157 spray applied waterproofing membrane in one application to achieve an overall dry film thickness of 1.2 mm.

Application using an airless spray gun (multiple coating in two direction application) is recommended.

Subsequent coats can be applied when the preceding coat was dried. (at least 6 hours)

During application full suitable protective clothing and equipment should be employed.

Sheltercoat 157

Spray Applied Waterproofing Membrane

Limitations

Sheltercoat 157 spray applied waterproofing membrane should not be applied without the necessary protective clothing – refer safety data. This product is very sensitive to air therefore containers cannot be resealed for future use once they have been opened.

Thinning and Clean Up

Thinning of Sheltercoat 157 spray applied waterproofing membrane is not required since this will inhibit the ability to achieve the dry film thickness. If thinning is required the addition of up to 10% of xylene should be used.

Other clean up may be done using xylene or other high aromatic hydrocarbon solvent.

Safety Precautions

Sheltercoat 157 spray applied waterproofing membrane is a hazardous and dangerous good. It is flammable and is irritating to the eyes. Keep away from sources of ignition. No smoking. Keep container in a well ventilated place. Do not empty into drains.

Only apply on still days with no wind and ensure any overspray does not intrude into inhabited or public areas. Do not apply near operating air conditioning intakes or other ventilation intakes.

Appropriate full body protective clothing, including external air fed hood must be worn during application. In case of contact with eyes, rinse with plenty of water and contact a doctor. If swallowed, immediately contact a doctor (shows the container or label).

ADDITIONAL INFORMATION IS LISTED IN THE MATERIAL SAFETY DATA SHEET.

Sheltercoat 157

Spray Applied Waterproofing Membrane

Technical Performance Data

Appearance	Colored viscous liquid
Density	1.4±0.1 (g/cm ³)
Solid Content (%)	92±2
Tack free time (hrs at 25°/60%RH)	max 3
Curing time (hrs at 25°/60%RH)	
Coating thickness 1.2mm	max 24
Coating thickness 3.0mm	24 – 48
Properties of film	
Hardness (Shore A)	70±10
Tensile Strength (kgf/cm ²)	over 35 (3.43 MPa)
Elongation (%)	over 500
Adhesion to concrete	1.2 MPa
Theoretical Coverage:	
At 1mm thickness	1 m ² per litre
At 1.2 mm thickness	0.8 m ² per litre

Handling & Storage

Sheltercoat 157 Spray Applied Waterproofing Membrane can be stored for 6 months at below 25°C. Avoid prolonged exposure to humidity or temperature above 50°C. Avoid contamination with water or alcohols.

Packing

21kg in a metal container.

DISCLAIMER





The technical details, recommendations and other information contained in this data sheet are given in good faith and represent the best of our knowledge and experience at the time of printing. It is your responsibility to ensure that our products are used and handled correctly and in accordance with any applicable Australian Standard, our instructions and recommendations and only for the uses they are intended. We also reserve the right to update information without prior notice to you to reflect our ongoing research and development program.

Country specific recommendations, depending on local standards, codes of practice, building regulations or industry guidelines, may effect specific

INSTALLATION RECOMMENDATIONS

The supply of our products and services is also subject to certain terms, warranties and exclusions, which may have already been disclosed to you in prior dealings or are otherwise available to you on request. You should make yourself familiar with them.

Appendix - The Slip Resistance Test

FUGRO TECHNICAL SERVICES LIMITED Fugro Development Centre, 5 Lok Yi Street, Tai Lam, Tuen Mun, N.T., Hong Kong.		Tel : +852 2450 8233 Fax : +852 2450 6138 E-mail : mallab@fugro.com Website : www.materiallab.com			
		Page 1 of 2			
Client Ref. : --					
Report No. : 155554ST151189					
<u>REPORT ON DETERMINATION OF THE SLIP RESISTANCE PROPERTIES OF FLOORING SURFACES</u>					
<u>Information Supplied by Client</u>					
Client	: ARDEX HONG KONG LTD.				
Project	: TESTING OF WATERPROOFING MEMBRANE				
Sample Description	: Sheltercoat 157 spray applied waterproofing system (sample 1)				
	Size	: 960mm x 470mm			
	Surface	: --			
	Finish	: --			
	Color	: --			
	Model	: --			
<u>Laboratory Information</u>					
Lab. Sample I.D.	: ST151189/1				
Date Received	: 08/12/2015				
Date Tested	: 21/12/2015				
Test Method	: DIN 51130 : 2003-08				
<u>Test Results</u>					
Technician 1			Technician 2		
Item	Limiting Angle (°) for Test Surface		Item	Limiting Angle (°) for Test Surface	
Test 1	19.1		Test 1	18.0	
Test 2	19.2		Test 2	18.2	
Test 3	18.8		Test 3	17.6	
Average	19.0		Average	17.9	
Calibration Factor	-2.5		Calibration Factor	-1.6	
Corrected Value	16.5		Corrected Value	16.3	
Average Value			16.4		
Category of Slip Resistance			R10		
Classification of the Corrected Average Acceptance Angle into Categories of Slip Resistance					
Corrected Average Acceptance Angle		Category of Slip Resistance			
6° to 10°		R9			
Over 10° up to 19°		R10			
Over 19° up to 27°		R11			
Over 27° up to 35°		R12			
Over 35°		R13			
Remarks	: 1.) The test results relate only to the sample tested.				
	: 2.) The test sample is shown in the photographs on page 2 of this report.				
Checked By :		Date :	21 JAN 2016	Certified By :	
					Date : 21 JAN 2016
				Chan Chun Wai Ivan Manager (Product Testing Laboratory)	
<small>The copyright of this document is owned by Fugro Technical Services Limited. It may not be reproduced except with prior written approval from the Company.</small>					
<small>GEN01/0914</small>					