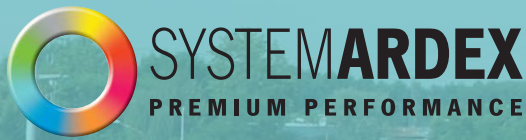

ARDEX ROOFING SYSTEMS BROCHURE



WE DEFEND YOUR BUILDING FROM WATER LEAKAGE

Established globally, ARDEX has pioneered and developed innovative waterproofing solutions for all forms of construction. With a proven track record, our commitment to uncompromising quality has resulted in products that stand up to not only the test of time, but the test of moisture too.

SINCE 1999, we supplied in Hong Kong...



OVER 6,000,000 m² of waterproofing material, which could cover the entire

HK Disneyland for 21 times



OVER 140,000 rolls of sheet membrane, long enough to cover the 1,900km

Qinghai-Tibet Railway

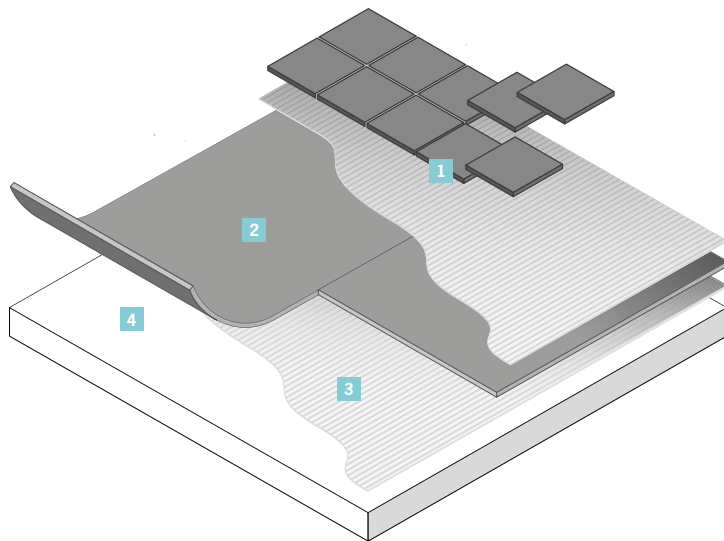
FEATURE PROJECTS



1. Hong Kong Coliseum
2. Hong Kong International Airport
3. RTHK Headquarter
4. CityU
5. Festival Walk
6. Wynn Palace Macau



ASD CLASSIFICATION TYPE A I - Sheet Waterproofing Roof Covering Requiring Protection



Technical Data Sheet
**Shelterbit Sand
3mm**

Cover Layer

- 1 **Any Covering Material**
e.g. Tiles

Waterproofing Layer

- 2 **ARDEX Shelterbit Sand 3mm**
Torch on Bituminous
Waterproofing Membrane



- 3 **ARDEX Shelterprimer Aqua**
Water-based Bitumen Primer



Substrate

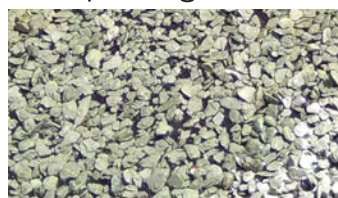
- 4 **Concrete, Cement Sand Screed,
Self-leveling Compound**



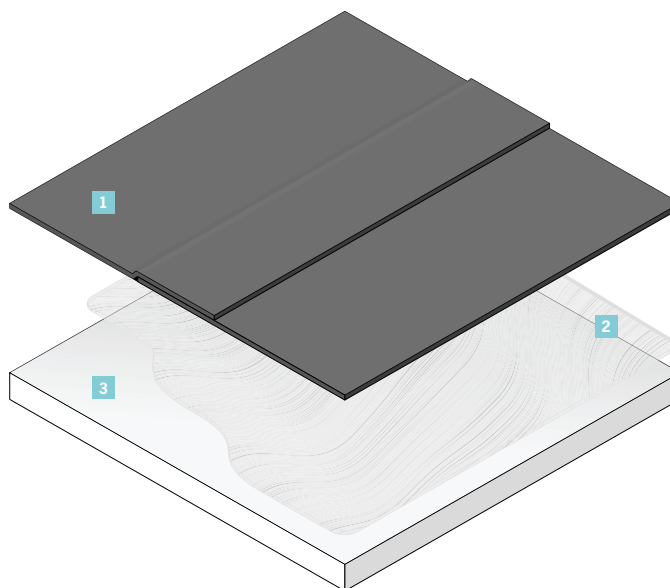
ASD CLASSIFICATION TYPE A II -
Sheet Waterproofing Roof Covering with Self-finishes

Waterproofing Layer

ARDEX Shelterbit Slated 4mm
Torch on Bituminous
Waterproofing Membrane



ARDEX Shelterprimer Aqua
Water-based Bitumen Primer



Substrate

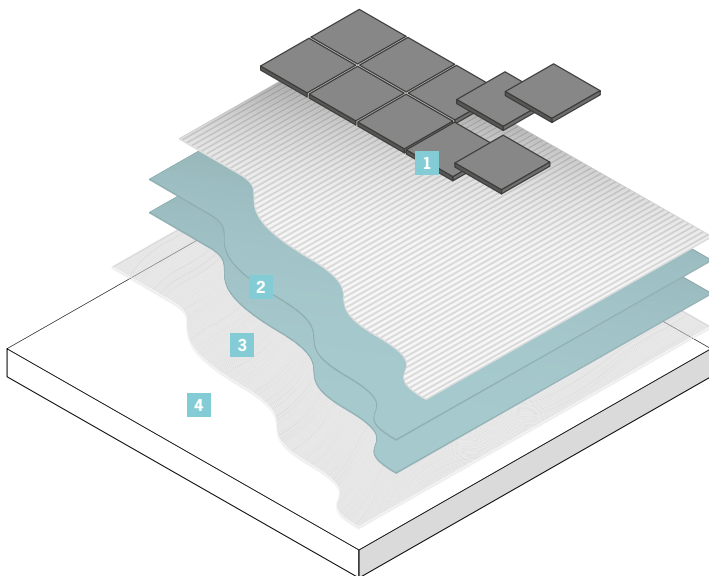
**Concrete, Cement Sand Screed,
Self-leveling Compound**



Technical Data Sheet
**Shelterbit Slated
4mm**



ASD CLASSIFICATION TYPE B I - Liquid Applied Waterproofing Roof Covering Requiring Protection



Technical Data Sheet
Sheltercoat



Technical Data Sheet
WPM 300

Cover Layer

Any Covering Material

Waterproofing Layer

ARDEX Sheltercoat
High Build Acrylic
Waterproofing Membrane



ARDEX WPM 300
Water-based
Epoxy Membrane



Substrate

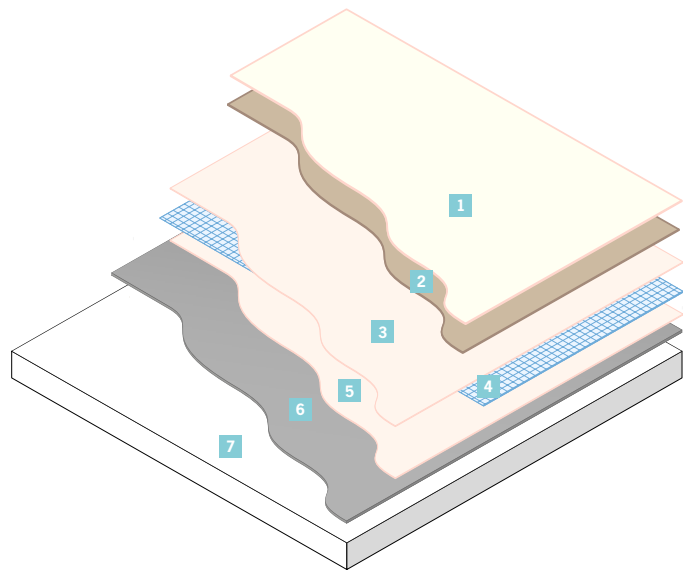
**Concrete, Cement Sand Screed,
Self-leveling Compound**



ASD CLASSIFICATION TYPE B II -
Liquid Applied Waterproofing Roof Covering
with Self-finishes

Waterproofing Layer

- 1 **ARDEX Sheltercoat**
High Build Acrylic
Waterproofing Membrane
 - 2 **Broadcasting Sand**
Optional
 - 4 **ARDEX Reinforcement**
Alkali-resistant Fiber Mesh
 - 6 **ARDEX WPM 300**
Water-based
Epoxy Membrane
- 
- 
- 



Technical Data Sheet
Sheltercoat



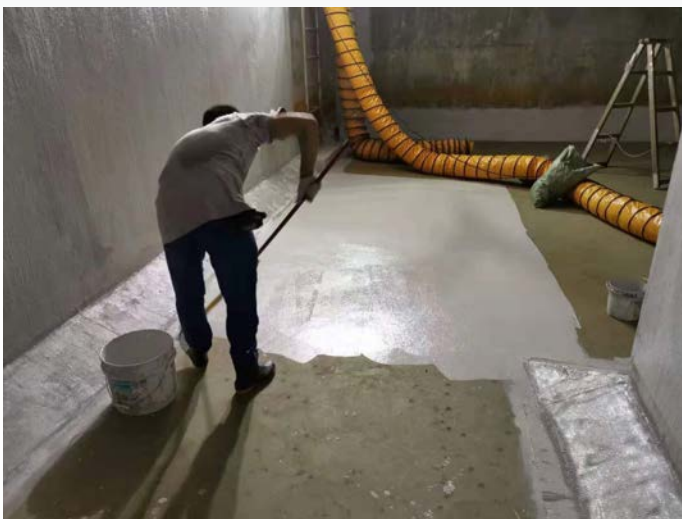
Technical Data Sheet
WPM 300

Substrate

- 7 **Concrete, Cement Sand Screed,
Self-leveling Compound**

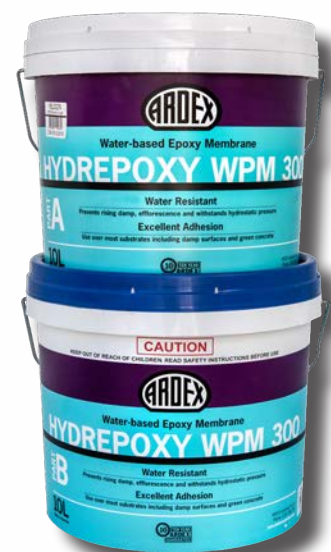
ARDEX WPM 300 WATER TANK WATERPROOFING

- Water resistant, prevents rising damp, efflorescence and with stands hydrostatic pressure.
- Excellent adhesion to most substrates including damp surfaces and freshly laid green concrete.
- Safe to use in sensitive locations.



Advantages

- Non-flammable & negligible odour
- Can be applied to damp surfaces
- Can be safely applied to freshly laid hardened(green) concrete
- Conforms to the requirements of : Australian standard 4020-2000 and British Standard 6920 for use in contact with potable water
- When applied directly to the substrate the cured membrane will withstand 250kPa hydrostatic pressure which is equivalent to a 25 metre head of water
- When used wet on wet over ARDEX WPM256 Bonding Bridge the cured membrane will withstand 400kPa pressure which is equivalent to 40 metre head of water





ARDEX HONG KONG LIMITED

Unit D, 16/F, CNT Tower

338 Hennessy Road, Wanchai, Hong Kong

Tel: +852 2529 6325 | Fax: +852 2529 8615

info@ardex.com.hk | www.ardex.com.hk